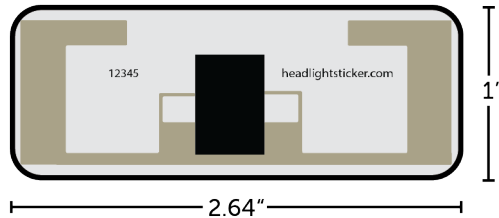
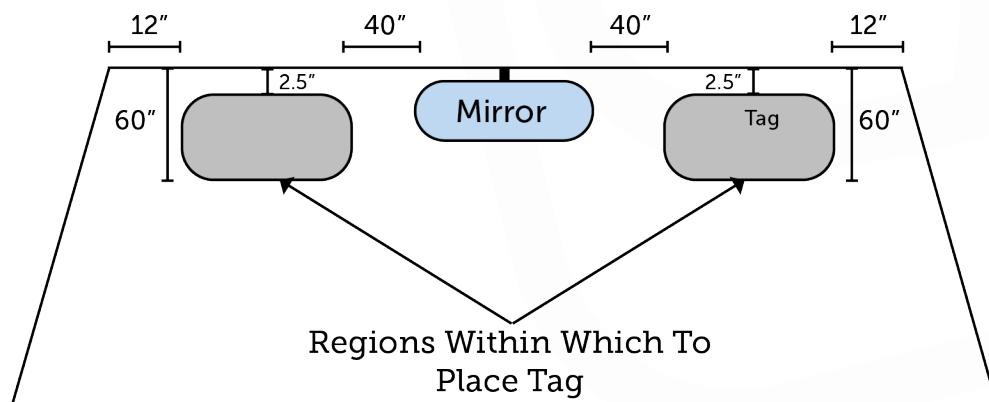


RFID WindshieldStickers



Windshield tags are non-transferrable passive (battery-free) RFID transponders for automatic vehicular identification. It is powered with energy from the reader. Upon removal, it is rendered ineffective to prevent theft or unauthorized transfer or sharing of credentials.

Specifications	
Dimensions	2.64" Wide by 1" Tall
Frequency	902-928 Mhz
Encoding	26-bit Wiegand
Operating Temperature	-40°F up to 185°F
Storage Temperature	-40°F up to 212°F
Relative Humidity	30% - 70%
Programmable Data Retention	10 years



Break on Removal Security:
Renders devices unusable when they are peeled off from a vehicle.

- Sticker must be placed **INSIDE** the vehicle on the street-facing side of the rear view mirror.
- **NOT** designed for exterior use.
- For the best reads, place in line of sight from RFID antenna with no obstructions.
- Stickers must be placed horizontally to be read by RFID system.

Installation Guidelines

Prior to installation, tags must be handled properly. Tags cannot be bent or folded when handled or in storage. Place the tag face down on a flat surface, then hold the tag flat while you peel the backing away from the tag.



- For optimal success rates, the tag should be placed with two inches of headlight above and below the sticker (i.e. not near the car's frame and with one inch of clearance from the left and right).
- Sticker **MUST** be installed horizontally.
- For best results, place the sticker in a location where the vehicle's approach will bring the sticker to face the reader.



headlightsticker.com/support